



Quality, Equity, Dignity
A Network for Improving Quality of Care
for Maternal, Newborn and Child Health

Updates- January 2021



NEW PUBLICATIONS

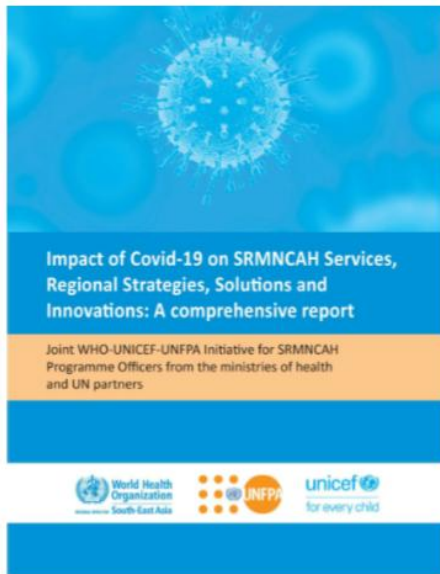
Towards maternal and newborn survival in the WHO South-East Asia Region: Implementation experience of the WHO SEARO model of Point-Of-Care Quality Improvement (POCQI)

This report from the WHO Regional Office for South-East Asia (SEARO) documents progress in implementing the regional quality of care improvement model- Point-of-Care Quality Improvement (POCQI) in the South-East Asia region.

The report showcases the extensive work led by countries and supported by WHO SEARO for quality improvement and documents the implementation progress in 5 countries in the region that are actively implementing POCQI: Bangladesh, Bhutan, Nepal, India and Sri Lanka. Successes, best practices and regional next steps to ensure continued quality improvement efforts are shared.

[Read more](#)





Impact of COVID-19 on SRMNCAH Services, Regional Strategies, Solutions and Innovations: A comprehensive report

This report shares the findings of a mapping exercise conducted in countries in the South East Asia region during March-April 2020. The aim of the mapping exercise was to assess the situation of the delivery of essential SRMNCAH services. This survey is part of a joint initiative between WHO-SEARO, UNICEF Regional Offices for South Asia (ROSA) and East Asia and Pacific (EAPRO) and UNFPA Asia-Pacific Regional Office (APRO).

This report shares the results of the mapping exercise, summarizes key findings, and documents what had worked, as well as sharing the key lessons learnt that can be forward and shared across countries.

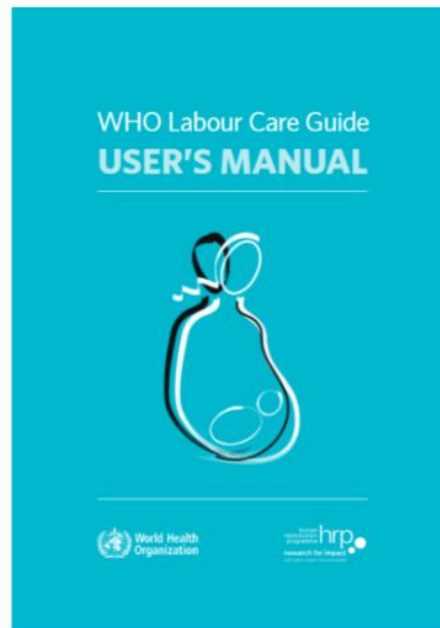
[Read more](#)

Read more

Launch of the Labour Care Guide and accompanying Labour Care Guide User's Manual

In December 2019, the new [Labour Care Guide](#) and accompanying [Labour Care Guide User's Manual](#) were launched by World Health Organization and HRP (the UNDP/UNFPA/UNICEF/WHO/World Bank Special Programme of Research, Development and Research Training in Human Reproduction).

This is a revolutionary step towards evidence-based, individualized labour. The Labour Guide aims to improve the quality of essential intrapartum care with the ultimate goal of improving maternal, fetal and newborn outcomes. The User's Manual aims to help health personnel who care for women during labour and childbirth to successfully use the Labour Care Guide.



EVENTS

Webinar- Monday 22 February 2021, 1 pm GMT

Progress in Scaling Up Early Essential Newborn Care in WHO Western Pacific Region

PROGRESS IN SCALING UP EARLY ESSENTIAL NEWBORN CARE IN WHO WESTERN PACIFIC REGION

WEBINAR - MONDAY 22 FEBRUARY 2021 AT 1 PM GMT

REGISTER and add to your calendar
WISHLIST on YouTube
REQUEST to join the Quality of Care community of practice

A newborn dies every two minutes in the Western Pacific Region, accounting for more than half of all under-five child deaths[1]. Many of these deaths are due to preventable causes. The Regional Action Plan aimed to reduce neonatal mortality and add approach targets: 1) At least 80% of facilities where the basic package is implemented, early Essential Newborn Care and 2) At least 50% of facilities to maintain an assessment of neonatal health personnel.

Early Essential Newborn Care aims to eliminate harmful practices that increase risk of infection, hypothermia and death among newborns including unnecessary separations, suction and procedures. This webinar will share the progress and experience of The WHO Regional Office for the Western Pacific in scaling up Early Essential Newborn Care.

Speakers:
 Dr. Howard Gelber, Technical Group Director for Maternal, Child, Health and Quality of Care, Division of Health Systems and Services, WHO Regional Office for the Western Pacific.

This webinar is organized by the Network for Improving Quality of Care for Maternal, Neonatal and Child Health and the Global Child Health Research Center for the Western Pacific.

Related and support:
 A network for improving quality of care for maternal, newborn and child health




REGISTER
 Request to join the Quality of Care for MNCH Community of Practice
 Watch live on YouTube

A newborn dies every two minutes in the Western Pacific Region, accounting for more than half of all under-five child deaths[1]. Many of these deaths are due to preventable causes.

Early Essential Newborn Care aims to eliminate harmful practices that increase risk of infection, hypothermia and death among newborns including unnecessary separations, suction and procedures. This webinar will share the progress and experience of The WHO Regional Office for the Western Pacific in scaling up Early Essential Newborn Care.

[Read more and register](#)

This webinar is organized by the Network for Improving the Quality of Care Maternal, Newborn and Child Health and the World Health Organization Regional Office for the Western Pacific

[1] Early Essential Newborn Care Clinical practice pocket guide
 © UNICEF/UN0255464/Pasquall

Save the date: Webinar- Tuesday February 2, 9 am EST

Adherence to IMCI protocols for sick children and young infants by sector webinar

Organized by the Child Health Task Force Quality of Care and Private Sector Engagement subgroup

Register

The USAID-funded SHOPS Plus initiative will present in an analysis of SPA surveys from seven countries - Afghanistan, DRC, Haiti, Malawi, Nepal, Tanzania, Senegal - to review adherence to IMCI protocols for sick children and young infants in both public and private facilities. Dr. Bundala, the newborn and child health programme manager from the Ministry of Health Tanzania will then respond and provide the country perspective, as well as steps that have been taken since the SPA (in 2015) to improve pediatric quality of care, implement PSBI, strengthen monitoring and supervision of health care workers – as well as reflect on Ministries of Health engagement with private providers.

Adherence to IMCI protocols for sick children and young infants by sector

February 2, 2021
 9:00AM Eastern



Please join SHOPS Plus through the Child Health Task Force's Quality of Care and Private Sector Engagement sub-groups to learn how well public and private sector providers adhere—or don't adhere—to integrated management for childhood illness (IMCI) guidelines in seven countries: Afghanistan, DR Congo, Haiti, Malawi, Nepal, Senegal, and Tanzania. SHOPS Plus researchers analyzed sick child provider interactions from recent Service Provision Assessment surveys, disaggregating results by public and private sector facilities. This research identifies critical and substantial gaps in adherence to recommended IMCI guidelines. Using these findings to improve integrated, high-quality sick child and young infant care is essential to decreasing child morbidity and mortality.

Presentation by: Dr. Sarah EK Bradley, SHOPS Plus Global Research Director.

Remarks from: Dr. Felix Ambrose Bundala, Newborn and Child Health Program Manager, Ministry of Health, Community Development, Gender, Elderly and Children, The United Republic of Tanzania.

REGISTER

